

**01308  
424269**



## Tools, Equipment & Small Plant

St. Andrew's Industrial Estate, Bridport, Dorset [www.fowlertools.co.uk](http://www.fowlertools.co.uk)



# Why hire makes sense

## Flexibility

You can hire by the day, week or weekend.  
Delivery service is available for larger items.

## Free advice when you hire

Our expert staff can advise you on the correct tools for the job.  
Safety leaflets and personal protection kits are supplied with all hire equipment.

## Save money

No capital tied up unnecessarily.  
No repair or maintenance costs.

## Save time

The right tools for the job means less valuable time wasted.

## Hiring is an opportunity to try out equipment before buying

Ask for details. We have the right tools and equipment for all your needs, at competitive prices.

## Safety check list

- Ask for any safety information leaflets.
- Our staff will offer expert guidance on all equipment hired.
- Use manufacturers guide book if available.
- For electrical work outside, use a transformer to reduce voltage.
- Always use a Residual Current Device 'RCD' adaptor plugged into a wall socket.
- Choose 110 volt equipment.
- Use personal protection items.



Goggles



Gloves



Hard Hat



Clothing



Ear Defenders



Face Shield



Safety Harness



Boots



Mask



Respirator



Welding Mask

PLEASE NOTE: A deposit and form of identification (eg. driving licence) will be required. All prices shown exclude VAT, delivery, blades, drill bits, sharpening charges for steels, damage caused by neglect or accident, and cleaning of plant.

Equipment is hired on the terms printed on the reverse of our hire contract. These are approved by the Hire Association of Europe of which we are a member.

- 3 Sales & Repairs
- 4 Compaction Equipment, Concrete & Surface Preparation, Tile, Block & Stone Splitters.
- 5 Chasing & Cutting, Concrete Saw
- 6 Fixings Tools, Hammers & Breakers, Compressors & Air Tools.
- 7 Drills, Masonry Drill Bits, Saws.
- 8 Woodworking, Pumps, Welders.
- 9 Heating & Drying, Site Power & Lighting.
- 10 Cleaning Equipment, Painting & Decorating.
- 11 Gardening, Chain Saws.
- 12 Ladders, Scaffolds, Platforms & Hoists.
- 13 Props, Surveying, Plumbing.
- 14 Material Lift, Tracked Access Platform
- 15 Hydraulic 2 man platform, Scissor Lift
- 16 Site Safety, Hand Tools.
- Kanga Kid 216, Compact Tractor & Implements.
- 18 Dumpers & Barrows, Mini Excavators 360° Slew.
- 19 Mini Excavators 360° Slew.
- Skid Steer Loaders, Shifta 4.5m Conveyor
- 21 Supa Screen

# Sales



## Power and Hand Tool Specialists

*Spares and Consumables for most makes*

- Air tools, fittings & compressors
- Bosch, Dremel, Metabo, Makita, Skil power tools
- Elektra Beckum woodworking machines
- Stihl chainsaws, Viking garden machinery, brush cutters, hedge trimmers, mowers, cultivators, disc cutters & power washers
- Trend router centre with a large range of cutters
- Baromix cement mixers
- Bosch & Marcris diamond blades & core drills
- Abrasive cutting & grinding discs (all sizes)
- Towers, ladders, steps & platforms
- Generators, transformers, plugs, sockets, leads & splitter boxes
- Welders, rods, wire & accessories
- Bosch accessories including drill bits, HSS, flat bits, masonry bits (up to 1m long), core bits, hole saws, circular, jig & sabre saw blades
- Nuts, bolts, washers, screws, fixing bolts & chemical fixings
- Fire extinguishers & blankets
- Site safety signs, fire signs, health & safety signs, also made to order
- Safety & protection equipment including gloves, goggles, helmets, respirators & safety harnesses
- Lawn mowers, strimmers, chippers, shredders, hand tools
- Contractors tools, spades, shovels, forks, rakes, pick axes, lights, cones, handles and much, much more...

## Electric & Petrol Repairs



**We can repair your existing equipment, we have direct spares supply from the majority of power tool manufacturers...**

Such as Black & Decker, Bosch, DeWalt, Hitachi, Makita, Metabo, Numatic, Skil, Dremel, Briggs & Stratton, Echo, Honda, Trend, Husqvarna and Stihl.

We undertake the repair and service of most portable power tools and equipment, and offer 5 day turnaround on most repairs (this may depend on availability and delivery of requested spare parts from our suppliers), saw blades and cutters sharpened, saw chain supplied and fitted while you wait.

# 01308 424269

## Compaction Equipment



Item	Day	Ext Day	W-End	Week
Compactor plate medium (petrol)	19.25	7.00	22.75	35.00
Compactor plate heavy duty (petrol)	20.90	7.60	24.70	38.00
Trench rammer (2 stroke)	20.90	7.60	24.70	38.00
Roller single drum (petrol) 151kg, 69cm	26.00	10.40	31.20	52.00
Roller ride on 1600kg, 80cm	52.00	26.00	65.00	130.00
Roller ride on 2350kg, 120cm	60.00	30.00	75.00	150.00

## Concrete and Surface Preparation



Item	Day	Ext Day	W-End	Week
Cement mixer tip up (240v)	12.00	4.00	14.00	20.00
Cement mixer tip up (petrol)	13.20	4.40	15.40	22.00
Cement mixer site (diesel)	18.00	6.00	21.00	30.00
Poker vibrator (petrol) 40mm/58mm	22.00	8.00	26.00	40.00
Poker vibrator (110v)	22.00	8.00	26.00	40.00
Power float (petrol)	38.40	12.80	44.80	64.00
Beam screeder 5.2m (petrol)	45.60	15.20	53.20	76.00
One Man Screeder	42.00	14.00	49.00	70.00
Road formers 6" x 10"	4.00	-----	4.00	4.00
Floor grinder (110v)	23.00	9.20	27.60	46.00
Floor tile stripper (110v)	32.50	13.00	39.00	65.00
Wall surface preparation grinder (110v)	25.20	8.40	29.40	42.00

## Tile, Block and Stone Splitters



Block splitter

Item	Day	Ext Day	W-End	Week
Tile cutter wall	8.00	3.20	9.60	16.00
Tile cutter floor	11.00	4.40	13.20	22.00
Paving / brick splitter	15.40	5.60	18.20	28.00
Block splitter 10"	19.80	7.20	23.40	36.00
Hydraulic stone splitter (diesel)	70.00	35.00	87.50	175.00



Hydraulic stone splitter



## Chasing and Cutting

Item	Day	Ext Day	W-End	Week
Mini grinder (110v)	9.00	3.00	10.50	15.00
9" Angle grinder (110v)	12.00	4.00	14.00	20.00
Cut-off saw-12" (110v)	15.00	6.00	18.00	30.00
Cut-off saw 12" (2 stroke)	20.40	6.80	23.80	34.00
Road saw 18" (petrol)	34.00	13.60	40.80	68.00
Mortar saw TCT blade (110v)	36.00	14.40	43.20	72.00
Wall chaser 5" double diamond disc (110v)	20.00	8.00	24.00	40.00
Bench saw masonry 16" (110v)	31.00	12.40	37.20	62.00
Diamond tile saw bench (110v/240v)	15.00	6.00	18.00	30.00



Diamond Blade wear	per mm	min cost
125mm general purpose	20.00	10.00
300mm general purpose	30.00	15.00
400mm building materials	60.00	30.00
450mm concrete / tarmac	60.00	30.00



## Concrete Chain Saw



Item	Day	Ext Day	W-End	Week
Concrete Chain Saw 12"	52.80	19.20	62.40	96.00

Chain wear = £96 per mm - Minimum charge of £48



With Diamond Chain. Will cut through 12" thick walls of brick, block, reinforced concrete, concrete cylinders & beams!!!



## Fixings Tools



Item	Day	Ext Day	W-End	Week
<b>Autofeed screw driver</b> 110v	16.80	5.60	19.60	28.00
<b>Cartridge nail gun</b> masonry/steel	16.80	5.60	19.60	28.00
<b>Gas nail gun</b> timber (first fix)	18.00	6.00	21.00	30.00
<b>Gas nail gun</b> (second fix)	18.00	6.00	21.00	30.00
<b>Floor board nailer</b>	15.00	6.00	18.00	30.00
<b>Staple tacker</b>	3.30	1.10	3.85	5.50
<b>Chemfix gun</b>	3.60	1.44	4.32	7.20
Gas, nails, screws, staples & chemical fix on sale				

## Hammers and Breakers



Item	Day	Ext Day	W-End	Week
<b>Demolition hammer</b> 5 kilo (110v)	18.60	6.20	21.70	31.00
<b>Demolition hammer</b> 11 kilo (110v)	21.45	7.80	25.35	39.00
<b>Bosch hammer</b> 16 kilo (110v)	24.75	9.00	29.25	45.00
<b>Road breaker</b> 27 kilo (110v)	24.75	9.00	29.25	45.00
<b>Road breaker</b> hydraulic JCB (petrol)	37.40	13.60	44.20	68.00
Breaker steels £1.50 each, Hammer steels £1.30 each				

## Compressors and Air Tools

Item	Day	Ext Day	W-End	Week
<b>Compressor</b> workshop 5.7CFM, 25L (240v)	12.00	4.80	14.40	24.00
<b>Compressor</b> workshop 22CFM, 120L (petrol)	24.00	9.60	28.80	48.00
<b>Air tool-stapler</b>	7.50	3.00	9.00	15.00
<b>Air hose</b>	1.80	0.60	2.10	3.00



Full range of compressors and air tools available to purchase

## Drills



Item	Day	Ext Day	W-End	Week
<b>Rotary hammer cordless</b> (36v/sds plus)	20.00	8.00	24.00	40.00
<b>Rotary hammer 2kilo</b> (110v/sds plus)	15.00	5.00	17.50	25.00
<b>Rotary hammer 4kilo</b> (110v/sds plus)	16.50	6.00	19.50	30.00
<b>Rotary hammer 5kilo</b> (110v/sds max)	18.60	6.20	21.70	31.00
<b>Rotary hammer 11kilo</b> (110v/sds max)	21.45	7.80	25.35	39.00
<b>Engineers drill 2 speed</b> 5/8" (110v)	15.00	5.00	17.50	25.00
<b>Angle drill</b> 3/8" (110v/240v)	13.80	4.60	16.10	23.00
<b>Diamond dry core drill</b> (110v)	20.00	8.00	24.00	40.00

Diamond Core wear	per mm	min cost
<b>52mm</b>	18.00	9.00
<b>117mm</b>	24.00	12.00
<b>127mm</b>	26.00	13.00
<b>152mm</b>	28.00	14.00



## Masonry Drill Bits



Item	Day	Ext Day	W-End	Week
<b>15-45mm</b>	4.00	1.60	4.80	8.00
<b>50mm core drill</b>	4.50	1.80	5.40	9.00
<b>150mm core drill</b>	9.00	3.60	10.80	18.00

## Saws



Item	Day	Ext Day	W-End	Week
<b>Jig Saw</b> (110v/240v)	12.00	4.00	14.00	20.00
<b>Reciprocating saw</b> (240v/110v)	13.20	4.80	15.60	24.00
<b>Circular saw 6"</b> (110v/240v)	13.20	4.80	15.60	24.00
<b>Circular saw 9"</b> (110v)	14.30	5.20	16.90	26.00
<b>Multi tool cut / sand</b>	12.00	4.00	14.00	20.00
<b>Cross cut sliding mitre saw 260mm</b> (110v)	30.00	10.00	35.00	50.00
Depth cut 100mm				

**Saw Blades  
on sale...**



## Woodworking

Item	Day	Ext Day	W-End	Week
<b>Multi tool</b> (240v) sanding & cutting	12.00	4.00	14.00	20.00
<b>Orbital sander</b> (240v)	10.80	3.60	12.60	18.00
<b>Random orbit sander</b> (240v)	12.00	4.00	14.00	20.00
<b>Belt sander 4"</b> (240v/110v)	14.30	5.20	16.90	26.00
<b>Floor sander 8"</b> (240v)	30.00	10.00	35.00	50.00
<b>Floor edger 7"</b> (240v)	14.00	5.60	16.80	28.00
<b>Floor finishing sander</b> (240v)	30.00	10.00	35.00	50.00
<b>Wood plane 3"</b> (240v)	14.40	4.80	16.80	24.00
<b>Router</b> (240v)	15.00	5.00	17.50	25.00
<b>Work top jig</b>	13.00	5.20	15.60	26.00
<b>Sash cramps 6"</b>	8.00	1.60	8.00	8.00
<b>Sash cramps 3"</b>	5.50	1.10	5.50	5.50
<b>Floor cramps</b> (pair)	18.00	3.60	18.00	18.00



### Range of floor care products on sale:

- Plastic Floor Coating • Acrylic Floor Coating
- Polyurethane Floor Coating
- Slip Resistant Floor Coating
- Floor Dye • Wood Dye • Floor Oil
- Laminated & Multi-Purpose Floor Shine



**Rustin's**

## Pumps

Item	Day	Ext Day	W-End	Week
<b>Submersible pump</b> (110v) 200 lpm	17.50	7.00	21.00	35.00
<b>Surface water/submersible pump</b> (240v)	17.50	7.00	21.00	35.00
<b>Diaphragm pump 2"</b> (petrol) 190 lpm	27.00	9.00	31.50	45.00
<b>Trash pump 2"</b> (petrol) 1200 lpm	24.75	9.00	29.25	45.00
<b>Trash pump 3"</b> (diesel) 1200 lpm	27.50	10.00	32.50	50.00
<b>Fuel transfer pump</b> (240v)	15.60	5.20	18.20	26.00
All pumps supplied with 7 metre hose				
Extra 7 metre hose	3.00	1.20	3.60	6.00



## Welders

Item	Day	Ext Day	W-End	Week
<b>ARC welder</b> 140amp (air cooled)	11.00	4.00	13.00	20.00
<b>Mig Welder</b> 130 amp	18.00	7.20	21.60	36.00
<b>Welder generator</b> 250amp (diesel)	40.70	14.80	48.10	74.00
Rods, wire and gas on sale				





## Heating and Drying



Item	Day	Ext Day	W-End	Week
Dehumidifier compact (240v)	24.00	8.00	28.00	40.00
Dehumidifier HD500 (240v/110v)	35.00	14.00	42.00	70.00
Air moving fan	14.30	5.20	16.90	26.00
Space heater 125,000btu (propane)	20.90	7.60	24.70	38.00
Fan heater 3kw (240v)	9.60	3.20	11.20	16.00
Radiant heater 3kw (240v)	18.70	6.80	22.10	34.00
Propane & Butane gas on sale				

## Site Power and Lighting



Item	Day	Ext Day	W-End	Week
Generator 2.4kva (petrol)	18.00	7.20	21.60	36.00
Generator 3.5kva (petrol)	20.00	8.00	24.00	40.00
Generator 5kva (diesel)	40.70	14.80	48.10	74.00
Generator 6kva Silenced (diesel)	50.00	20.00	60.00	100.00
Transformer 3.3kva	3.60	1.20	4.20	6.00
Extension Leads (240v)	3.00	1.20	3.60	6.00
Extension Leads (110v)	3.00	1.20	3.60	6.00
Distribution Box (110v)	3.00	1.20	3.60	6.00
Floodlight 500w (110v)	5.00	2.00	6.00	10.00



**Bosch Professional Workwear**  
Available at Fowler Hire & Sales Ltd.

## Cleaning Equipment

Item	Day	Ext Day	W-End	Week
<b>Vacuum cleaner</b> dry/med (110v/240v) 15L	12.10	4.40	14.30	22.00
<b>Vacuum cleaner</b> wet & dry/large (110v) 40L	16.00	6.40	19.20	32.00
<b>Vacuum cleaner</b> wet & dry/indust (110v) 70L	17.50	7.00	21.00	35.00
<b>Carpet shampooer</b> (240v)	14.00	5.60	16.80	28.00
<b>Floor polisher</b> industrial (240v)	17.60	6.40	20.80	32.00
<b>Pressure washer</b> cold/1500psi (240v)	25.20	8.40	29.40	42.00
<b>Pressure washer</b> cold/1500psi (petrol)	32.00	12.80	38.40	64.00
<b>Pressure washer</b> hot/1700psi (240v)	46.20	16.80	54.60	84.00
<b>Drain Cleaning attachment</b> (PET. Machine)	15.00	6.00	18.00	30.00
Detergent & shampoo on sale				
<b>Steam Cleaner</b> (240v)	24.00	8.00	28.00	40.00



### Hygienically clean without the use of chemicals.

Hygienic and environmentally friendly: Kärcher steam cleaners clean all hard surfaces without any chemical cleaning agents.

### Hot water high pressure cleaners.

High pressure cleaners clean even better with hot water at the same amount of pressure.



## Painting and Decorating

Item	Day	Ext Day	W-End	Week
<b>Paint stripper</b> (240v) Hot air	8.80	3.20	10.40	16.00
<b>Wallpaper stripper</b> (240v)	11.00	4.00	13.00	20.00
<b>Wallpaper stripper</b> spiked roller	1.50	0.60	1.80	3.00



Wallpaper stripper (240v)

## Gardening

Item	Day	Ext Day	W-End	Week
Hedge trimmer 24" cordless (36v battery)	25.20	8.40	29.40	42.00
Hedge trimmer 24" (2 stroke)	25.20	8.40	29.40	42.00
Long reach hedge trimmer (2 stroke)	31.20	10.40	36.40	52.00
Grass cutter 18" (petrol)	20.00	8.00	24.00	40.00
Flail mower (petrol)	44.00	16.00	52.00	80.00
Brush cutter (2 stroke)	27.00	9.00	31.50	45.00
Leaf blower vac (2 stroke)	22.80	7.60	26.60	38.00
Lawn scarifier (petrol)	34.10	12.40	40.30	62.00
Lawn aerator (petrol)	44.00	16.00	52.00	80.00
Turf cutter (petrol)	35.75	13.00	42.25	65.00
Rotavator C8hp (petrol)	36.50	14.60	43.80	73.00
Tiller 5hp (petrol)	30.00	12.00	36.00	60.00
Power Harrow C10 (petrol)	44.00	16.00	52.00	80.00
Post hole borer hand	5.00	2.00	6.00	10.00
Post hole borer (2 stroke)	27.00	10.80	32.40	54.00
Post driver hand	5.00	2.00	6.00	10.00
Pole pruner	5.50	2.20	6.60	11.00
Garden roller	6.00	2.40	7.20	12.00
Fertilizer spreader	6.00	2.40	7.20	12.00
Shredder/chipper 1¼" (240v)	24.00	9.60	28.80	48.00
Wood chipper 3" (petrol)	45.00	18.00	54.00	90.00
Wood chipper 4" (petrol)	60.00	24.00	72.00	120.00
Wood chipper 6" (diesel) towable	102.00	51.00	127.50	255.00
Stump grinder (petrol)	44.00	16.00	52.00	80.00
Stump grinder tracked mounted	101.75	79.75	153.70	320.00
Log splitter (240v)	38.00	15.20	45.60	76.00



## Chain Saws

Item	Day	Ext Day	W-End	Week
Chain saw 14" (240v) + P P Set	28.80	9.60	33.60	48.00
Chain saw 16" (2 stroke) + P P Set	36.00	12.00	42.00	60.00
Chain Saw Personal Protection Set	7.50	3.00	9.00	15.00
Extra chain £8.00				
Chain oil, 2 stroke oil & files on sale				



**Chain oil, 2  
Stroke oil & Files  
on sale...  
Chains made  
to order**

# Ladders, Scaffolds, Platforms and Hoists



Item	Day	Ext Day	W-End	Week
Extension ladder 17' (2x10)	12.00	4.00	14.00	20.00
Extension ladder 21' (2x12)	14.40	4.80	16.80	24.00
Extension ladder 29' (3x11)	19.20	6.40	22.40	32.00
Roof ladder 12'	16.80	5.60	19.60	28.00
Roof ladder 17'	16.80	5.60	19.60	28.00
Step ladder 6' (aluminium)	9.00	3.00	10.50	15.00



## Alloy Towers - Double Width 1.4m x 1.8m (4'8" x 6'0") with ladders

Item	Day	Ext Day	W-End	Week
2.4m Double width alumin.tower	22.00	8.80	26.40	44.00
3.4m Double width alumin.tower	25.00	10.00	30.00	50.00
4.4m Double width alumin.tower	28.50	11.40	34.20	57.00
5.4m Double width alumin.tower	32.00	12.80	38.40	64.00
6.4m Double width alumin.tower	35.00	14.00	42.00	70.00
7.4m Double width alumin.tower	38.50	15.40	46.20	77.00
8.4m Double width alumin.tower	42.00	16.80	50.40	84.00
9.4m Double width alumin.tower	45.50	18.20	54.60	91.00
10.4m Double width alumin.tower	49.00	19.60	58.80	98.00

## Alloy Towers - Single Width 0.885m x 1.8m (2'11" x 6'0") with ladders

Item	Day	Ext Day	W-End	Week
2.2m Single width alumin.tower	22.00	8.80	26.40	44.00
3.2m Single width alumin.tower	25.00	10.00	30.00	50.00
4.2m Single width alumin tower	28.50	11.40	34.20	57.00
5.2m Single width alumin tower	32.00	12.80	38.40	64.00
6.2m Single width alumin tower	35.00	14.00	42.00	70.00
7.2m Single width alumin tower	38.50	15.40	46.20	77.00
8.2m Single width alumin tower	42.00	16.80	50.40	84.00



## Alloy Stair Scaffold

Item	Day	Ext Day	W-End	Week
2/3 metre stair scaffold	32.00	12.80	38.40	64.00

Item	Day	Ext Day	W-End	Week
Decorators platform (alum)	16.80	5.60	19.60	28.00
Youngman staging (12', 16', 20')	9.90	3.60	11.70	18.00
Handrail for Youngman staging	4.90	1.96	5.88	9.80
Scaffold Boards (8', 10', 13')	1.65	0.33	1.65	1.65
Trestle adjustable no.1 (18" to 33")	2.20	0.88	2.64	4.40
Trestle adjustable no.3 (42" to 72")	2.20	0.88	2.64	4.40
Plaster board lifter	23.10	8.40	27.30	42.00
Rubbish chute per metre	2.40	0.80	2.80	4.00
Hopper head	2.75	1.10	3.30	5.50
Scaffold hoist 200kg (110v)	26.50	10.60	31.80	53.00
Chain blocks 1500kg	12.50	5.00	15.00	25.00
Chain blocks 2000kg	14.00	5.60	16.80	28.00
Winch turfor 3ton	16.00	6.40	19.20	32.00
Engine crane 15cwt	21.00	7.00	24.50	35.00
Jack-trolley 2ton	10.00	4.00	12.00	20.00



## Props

Item	Day	Ext Day	W-End	Week
<b>Acrow prop</b> size 0 (1.04m to 1.83m)	3.00	-----	3.00	3.00
<b>Acrow prop</b> size 1 (1.75m to 3.12m)	3.00	-----	3.00	3.00
<b>Acrow prop</b> size 2 (1.98m to 3.25m)	3.00	-----	3.00	3.00
<b>Acrow prop</b> size 3 (2.59m to 3.96m)	3.00	-----	3.00	3.00
<b>Acrow prop</b> size 4 (3.20m to 4.88m)	3.00	-----	3.00	3.00
<b>Trench struts</b>	3.00	-----	3.00	3.00
<b>Strong boy support attachment</b>	3.40	1.36	4.08	6.80



## Surveying

Item	Day	Ext Day	W-End	Week
<b>Line marker</b>	8.00	-----	8.00	8.00
<b>Site level set</b> (auto)	24.00	9.60	28.80	48.00
<b>Rotating Laser site level</b>	32.50	13.00	39.00	65.00
<b>Measuring wheel</b>	13.20	5.28	15.84	26.40
<b>Pipe detector</b> (cat)	19.00	7.60	22.80	38.00
<b>Pipe detector</b> (genny)	19.00	7.60	22.80	38.00
<b>Inspection camera</b> (cavities etc.)	17.50	7.00	21.00	35.00
<b>Metal detector</b>	16.50	6.00	19.50	30.00



## Plumbing

Item	Day	Ext Day	W-End	Week
<b>Pipe bender</b> (19 to 22mm)	9.57	3.48	11.31	17.40
<b>Pipe freezer kit</b> (110v)	34.80	11.60	40.60	58.00
<b>Pipe Threading Machine</b> (½" to 2") (110v)	26.40	9.60	31.20	48.00
<b>Plumbers Vice</b>	7.50	3.00	9.00	15.00
<b>Stilson</b>	4.80	1.92	5.76	9.60
<b>Drain rods</b> 60' set	12.00	4.00	14.00	20.00
<b>Gully scoop</b>	7.00	2.80	8.40	14.00



## Road, Fire & Safety Signs on sale...



## Material Lift

Item	Day	Ext Day	W-End	Week
Material Lift	48.00	19.20	57.60	96.00

**Built for Handling Heavy Objects**

**Ideal For Lifting Beams, Ducting, Heaters etc.**

- Easily Folds Away
- Loading Bar
- Roller Wheels
- Inside-Mast Cable Feed
- Summer-built Winch
- 10" Rough Terrain Wheels
- Lockable 5" Casters
- Reversible Forks

**Max Lift Height**  
15' 2" (4.6 m)  
**Lifting Capacity**  
800 lb (360 kg)  
**Weight** 150kg



## Tracked Access Platform

Item	Day	Ext Day	W-End	Week
Tracked access platform	160.20	89.00	191.35	445.00
Includes safety harness				

**No scaffold required for those high and inaccessible jobs - Chimneys, gable ends, overhead lighting, conservatory and lean-to roofs, decorating and repairs**

Can be used at 14 meters high by one person, & 12 metres high by 2 persons. The hydraulic widening system of the tracks assures a higher stability during transport on inclined surfaces. The reduced width dimensions allow it to fit through even the narrowest gaps, that until now were inaccessible with an aerial platform.



780mm



1080mm

**Vertical Range:**  
12.6m - 14.0m

**Horizontal Range:**  
5.6m - 7.0m

**Size in Transport:**

Length: 3.98m

Height: 1.98m

Width: 0.78m/1.08m

Weight: 1700kg

Outrigger Footprint: 3m x 3m



## Hydraulic 2 Man Platform

No scaffold required for those high and inaccessible jobs - Chimneys, gable ends, overhead lighting, conservatory and lean-to roofs, decorating and repairs

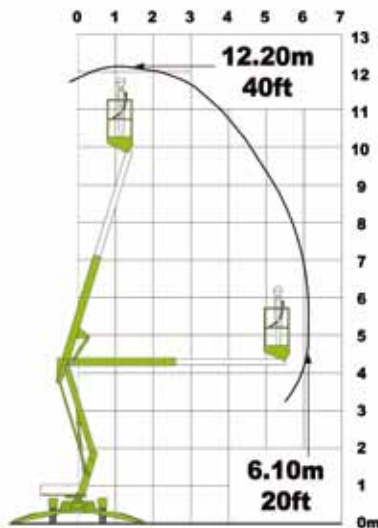


### Operating Dimensions

- Max. Working Height 12.20m (40ft)
- Max. Platform Height 10.20m (33ft 6in)
- Machine Length 4.50m (14ft 9in)
- Retracted Width 1.10m (3ft 7in)
- Max. Outreach 6.10m (6ft 3in)
- Safe Working Load 200kg (440lbs)
- Working Outreach 6.10m (20ft)
- Machine Height 1.90m (6ft 3in)
- Machine Width 1.50m (4ft 11in)
- Working Width 3.55m (11ft 8in)
- Minimum Weight 1400kg (3100lbs)
- Cage Size 1.10m x 0.65m (3ft 7in x 2ft 2in)



Item	Day	Ext Day	W-End	Week
Hydraulic 2 man platform	81.00	45.00	96.75	225.00
Includes safety harness				



## Self-Propelled Scissor Lift

Item	Day	Ext Day	W-End	Week
Self-propelled scissor lift	115.50	33.00	132.00	165.00
Includes safety harness				



### Operating Dimensions

- Max. Working Height 8.10m (26ft)
- Max. Platform Height 6.10m (20ft)
- Height Stowed 2.03m (6ft 8 in)
- Platform Length Outside Extended 2.25m (7ft 5 in)
- Width 0.81m (2ft 8 in)
- Lift Capacity 363kg
- Weight 1,621kg

## Site Safety



Item	Day	Ext Day	W-End	Week
Road barrier per 2m run	6.00	-----	6.00	6.00
Security fence panel 3.5m x 2m	2.20	-----	2.20	2.20
Road signs	4.60	-----	4.60	4.60
Road cone 30"	1.20	-----	1.20	1.20

## Hand Tools

Item	Day	Ext Day	W-End	Week
Bolt croppers 18"	9.00	3.60	10.80	18.00
Bolt croppers 24"	10.00	4.00	12.00	20.00
Bolt croppers 42"	15.00	6.00	18.00	30.00
Carpet stretcher	7.00	2.80	8.40	14.00
Drain rods (60' set)	12.00	4.00	14.00	20.00
Gully Scoop	7.00	2.80	8.40	14.00
Flue brush (30' set)	10.00	4.00	12.00	20.00
Sack truck	4.95	1.80	5.85	9.00
Pallet truck	16.00	6.40	19.20	32.00
Pick axe	4.80	-----	4.80	4.80
Engine crane 15cwt	21.00	7.00	24.50	35.00
Roofers Torch (propane)	6.00	2.40	7.20	12.00
Jack-trolley 2ton	10.00	4.00	12.00	20.00
Tyrolean machine	9.00	3.60	10.80	18.00
Wheelbarrows	5.00	-----	5.00	5.00



## Safety Boots on sale...





## Compact Tractor and Implements

Item	Day	Ext Day	W-End	Week
<b>Tractor compact 4wd</b>	59.99	59.99	84.60	180.00
<b>Tractor attachments</b>				
Rotavator	24.50	9.80	29.40	49.00
Chain Harrow	2.00	0.80	2.40	4.00
Roller	10.50	4.20	12.60	21.00
Lawn leveller	6.00	2.40	7.20	12.00
Front loader & weight	15.00	6.00	18.00	30.00
Flail mower	24.50	9.80	29.40	49.00



1.27m wide

## Kanga Kid 216

Item	Day	Ext Day	W-End	Week
<b>Kanga Kid 216 + 4 in 1 bucket</b>	49.50	49.50	85.50	180.00
<b>Kanga attachments</b>				
Trencher	35.00	14.00	42.00	70.00
Auger	30.00	12.00	36.00	60.00
Auger bit / Mixer *	8.00	3.20	9.60	16.00
Rotavator	25.00	10.00	30.00	50.00

\* Please note, mixer requires Auger drive unit



Trencher



Rotavator



Mixer



Auger



4 in 1 Bucket

Width	0.80m
Height	1.20m
Max dump height	1.185m
Auger	200mm - 300mm
Trencher width	100mm
Trencher depth	500mm

## Dumpers and Barrows

Item	Day	Ext Day	W-End	Week
<b>Dumper 2 ton 4wd</b> (width 1.75m)	50.00	25.00	62.50	125.00
<b>Dumper 3 ton 4wd</b> (width 1.96m)	50.00	25.00	62.50	125.00
<b>Dumper 3 ton swivel skip</b> (width 1.90m)	70.00	28.00	84.00	140.00
<b>Dumper 6 ton 4wd</b> (width 2.13m)	75.00	30.00	90.00	150.00
<b>Dumper 1 ton 4wd hi-tip</b> (width 1.13m)	52.20	29.00	62.35	145.00
<b>Tracked barrow hi-tip</b> (width 0.70m)	50.00	20.00	60.00	100.00



Width: 1.13m  
Load: 1 ton  
Max dump  
height: 1.9m



3 ton 4wheel drive dumper

Width: 700mm  
Weight: 300kg  
Load: 500kg  
Max dump  
height: 1.43m

## Mini Excavators - 360° Slew

Item	Day	Ext Day	W-End	Week
<b>Mini excavator 5100kg 360 slew</b>	97.35	97.35	166.38	354.00

Rubber tracks & cabin	
Buckets - 12", 18", 24", 36", 60"	
Max height	2.54m
Width	1.96m
Max dig	3.855m
Max dig radius	6.155m
Max dump height	4.130m



Item	Day	Ext Day	W-End	Week
<b>Mini excavator 2750kg 360 slew</b>	75.35	75.35	128.78	274.00



Rubber tracks & cabin	
Buckets - 12", 18", 24", 36", Grading	
Max height	2.44m
Width	1.40m
Max dig	2.725m
Max dig radius	4.665m
Max dump height	3.285m

Item	Day	Ext Day	W-End	Week
<b>Mini excavator 1500kg 360 slew</b>	57.75	57.75	98.70	210.00



Rubber tracks & canopy	
Buckets - 12", 18", 24", 30", Grading	
Max height	2.315m
Width	1.00m
Max dig	2.335m
Max dig radius	3.895m
Max dump height	2.55m

Item	Day	Ext Day	W-End	Week
<b>Mounted hammer</b>	40.00	20.00	50.00	100.00
<b>Mounted stump grinder</b>	44.00	22.00	55.00	110.00
<b>To fit 1500kg machine</b>				

Item	Day	Ext Day	W-End	Week
<b>Micro excavator 875kg 360 slew</b>	57.75	57.75	98.70	210.00



Rubber tracks & roll bar	
Buckets - 9", 18", 24", Grading	
Max height	2.055m
Min height	1.30m
Width	0.7m to 0.86m expanded
Max dig	1.705m
Max dump height	2.020m



## Skid Steer Loaders



Item	Day	Ext Day	W-End	Week
<b>Bobcat 543 + bucket</b>	79.99	79.99	112.80	240.00
<b>Fork &amp; grapple</b>	7.33	7.33	10.34	22.00

Model	543
Weight	1483kg
Width	1.22m
Height	1.83m
Max dump height	2.40m

Cleaning, fuel and delivery extra

## Shifra 4.5m Conveyor

This is a portable conveyor for rubble, aggregate, soils etc. Lightweight aluminium construction, easily manoeuvred by 1 man, 2 speed motor, deep troughed chevron belt, large hopper for bulk loading. Any load, any distance, up to 45 degrees incline.



Item	Day	Ext Day	W-End	Week
<b>Shifra 4.5m Conveyor</b>	65.00	26.00	78.00	130.00

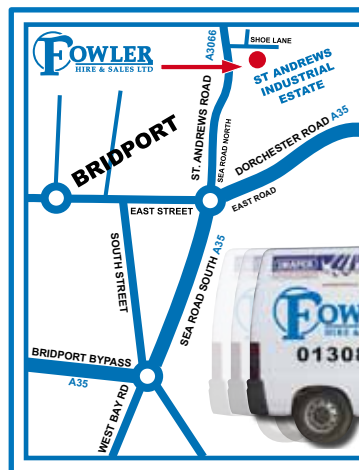




## Supa Screen

This is a very portable and compact machine which can be used to screen soils and aggregates. Supa Screen can be used with wheel barrows, Shifta conveyors, hand loaded or loaded with a mini digger. It is available with a choice of quick change screens of 12mm, 18mm & 50mm.

Item	Day	Ext Day	W-End	Week
Supa Screen	70.00	28.00	84.00	140.00



## How to find us!

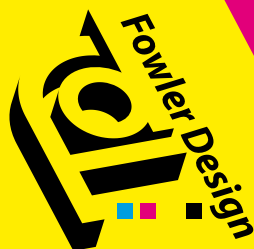
Fowler Hire & Sales Ltd is situated on St Andrews Industrial Estate, just off the A3066, Bridport to Beaminster road.

## We can come to you!

Our vehicle, fitted out with power tools and accessories, travels through your area. We also collect power tools for repair, plus blades and steels for sharpening.



Call Ian on:  
01308 424269  
or Mobile:  
07891 446318



Designed by **Fowler Design**

Mob: 07854 706929

Email: paul@fowlerdesign.co.uk

[www.fowlerdesign.co.uk](http://www.fowlerdesign.co.uk)



logos, business cards, leaflets, brochures, advertising, vehicle graphics, illustration



# BOSCH

Fowlers has the special status of Bosch System Specialist (BSS) given only to a few stores across the UK. This enables us to offer an excellent range of both Professional Tools and Accessories making us the leading stockist in the area. The dedicated Bosch space offers a wide choice at competitive prices, making it easy to find the product you require.

As a Bosch System Specialist we are able to offer exclusive deals.

Our well trained staff work very closely with Bosch to be able to offer specialist technical advice and keep updated on new products as they become available.





**FOWLER**  
HIRE & SALES LTD





**You can shop in our spacious showrooms at  
St. Andrew's Industrial Estate Bridport • Dorset DT6 3EX**



**WE HAVE A LARGE RANGE OF POWER TOOLS  
AND EQUIPMENT IN STOCK**

**STIHL® VIKING®**

*Garden Machinery - Large Range Now In Stock*



**FOWLER**  
HIRE & SALES LTD

**01308  
424269**

OPENING HOURS: Monday to Friday: 7.30am - 5.30pm, Saturday: 7.30am - 12.30pm only

St. Andrew's Industrial Estate, Bridport, Dorset | email: [sales@fowlertools.co.uk](mailto:sales@fowlertools.co.uk)